

COMMERCIAL SUPPORT

This continuing medical education activity is supported in part with educational grants from:

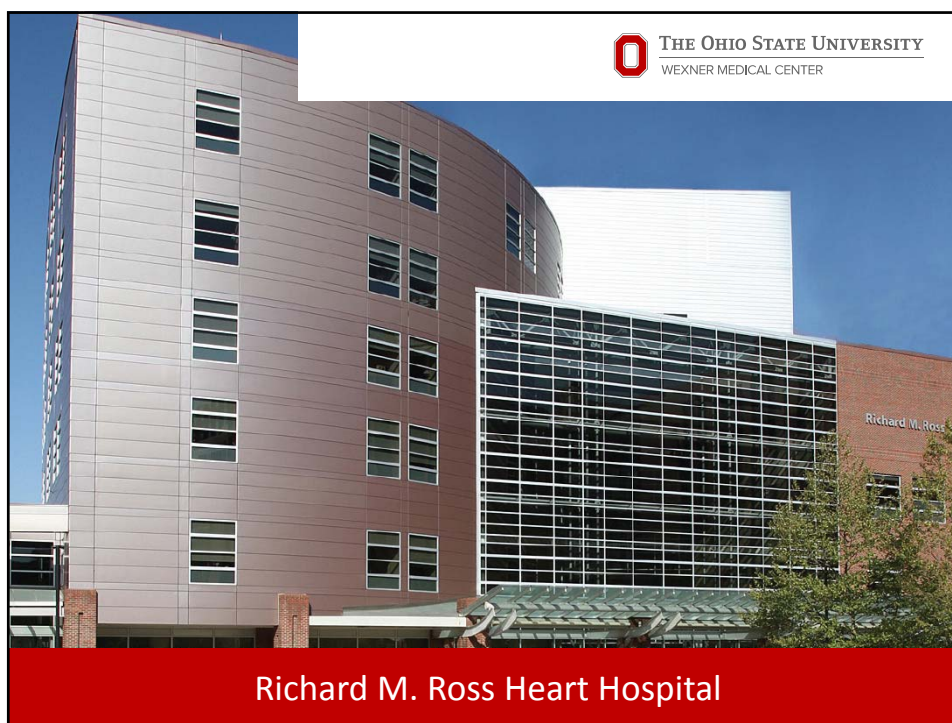
**Biotronik
Biosense Webster
Spectranetics**

Commercial and non-commercial displays are provided by:

**Atricure
Biosense Webster
Novartis
Zoll**

**Baylis
Janssen
Pfizer**

**Biotronik
Merit Medical
Spectranetics**



Accreditation Statement

The Ohio State University Medical Center, Center for Continuing Medical Education (CCME) is accredited by the Accreditation Council for Continuing Medical Education (ACCME®) to providing continuing medical education for physicians.

AMA Credit Designation Statement

The Ohio State University Medical Center, Center for Continuing Medical Education designates this Live Activity for a maximum of **12.25 AMA PRA Category 1 Credit(s)™**. Physicians should claim only the credit commensurate with the extent of their participation in the activity.

CCME Disclosure Statement

As a provider of AMA PRA Category 1 Continuing Medical Education, it is the policy of CCME to adhere to the ACCME Standards for Commercial Support to avoid any conflict of interest and/or commercial bias and must ensure balance, independence, objectivity and scientific rigor in all its sponsored educational activities. All individuals who are in a position to control content of an educational activity, including presenters, panel members and moderators, must to disclose any relevant financial relationships that create a conflict of interest.

Nothing in this program is intended to imply that any off-label or unapproved product use discussed is reimbursed by any government or private payer or that submission of a claim for such use is proper.

PLANNING COMMITTEE DISCLOSURE STATEMENTS

The following **planning committee members** have **no relevant** financial relationships with commercial interests to disclose that would influence their development of content for this activity; their educational unit does not have a financial interest or affiliation with an organization that may receive direct benefit from the subject of the proposed CME activity; and they will not be personally compensated for their role in the planning or execution of this proposed CME activity by an organization other than The Ohio State University:

Karla Rusk, MS,CNP, CCRN

The following **planning committee members** have relevant financial relationships with commercial interests to disclose that could influence their development of content for this activity; their educational unit does not have a financial interest or affiliation with an organization that may receive direct benefit from the subject of the proposed CME activity; and they will not be personally compensated for their role in the planning or execution of this proposed CME activity by an organization other than The Ohio State University:

Ralph Augustini, MD discloses he has relationships with commercial interests in the following areas: Grant/Research Support: Medtronic; Consultant/Speaker Bureau: Respicardia; and Advisory Board Membership: Medtronic. In the interests of avoiding conflicts of interest, he was excluded from analyzing needs assessment results; determining objectives, format, selecting faculty; and reviewing presentations where his potential conflict exists.

Emile Daoud, MD discloses he has relationships with commercial interests in the following areas: Grant/Research Support: Abbott, Biosense Webster, Biotronik, Boston Scientific, and Medtronic; and Advisory Board Membership: Biosense Webster. In the interests of avoiding conflicts of interest, he was excluded from analyzing needs assessment results; determining objectives, format, selecting faculty; and reviewing presentations where his potential conflict exists.

Melissa Emani, MS,CNP discloses she has relationships with commercial interests in the following areas: Grant/Research Support: Abbott/St. Jude Medical, CHF Solutions, Medtronic, and Stebleton and Snyder; Consultant/Speaker Bureau: Abbott/St. Jude Medical; Advisory Board Membership: Care DX; and Other Financial Material Support : Boston Scientific. Her presentation **will not** include discussion of unapproved or “off-label” usage of commercial products and/or devices.

Raul Weiss, MD discloses he has relationships with commercial interests in the following areas: Grant/Research Support: Biosense Webster, Biotronik, Boston Scientific, Medtronic, and St. Jude Medical; Consultant/Speaker Bureau: Biosense Webster, Biotronik, Boston Scientific, and Merit Medical; and Advisory Board Membership: Biosense Webster and Boston Scientific. In the interests of avoiding conflicts of interest, he was excluded from analyzing needs assessment results; determining objectives, format, selecting faculty; and reviewing presentations where his potential conflict exists.

Clinical Trial: **MADIT-SICD**

OSU is participating in a multicenter **clinical trial** looking at automatic defibrillator implantation with **subcutaneous implantable cardioverter defibrillator**.

Enrolling patients that meet the following criteria*:

- Post MI
- Diabetes Mellitus
- 60 years of age or older
- EF 36-50%

**Additional criteria may apply.*

OSU Heart & Vascular Research Organization
For Information or patient referrals:

614-685-4619

Cardiovascular.Research@osumc.edu

SPEAKER DISCLOSURE STATEMENTS

The following **speakers** have no relevant financial relationships with commercial interests to disclose that would influence their development of content for this activity; their educational unit does not have a financial interest or affiliation with an organization that may receive direct benefit from the subject of the proposed CME activity; and they will not be personally compensated for their role in the planning or execution of this proposed CME activity by an organization other than The Ohio State University:

J. Michael Boyd, PharmD	Amit Doshi, MD	Rami Khayat, MD
Andrea Koflowitch, MS,CNP	Zhenguo Liu, MD	Janet May, MSN,CNP
Rohit Mehta, MD	Toshimasa Okabe, MD	Gregory Rushing, MD
Karla Rusk, MS, CNP, CCRN	Theresa Strzelczyk, MS,APN-CNS	Jaret Tyler, MD

The following **speakers** have relevant financial relationships with commercial interests to disclose that could influence their development of content for this activity; their educational unit does not have a financial interest or affiliation with an organization that may receive direct benefit from the subject of the proposed CME activity; and they will not be personally compensated for their role in the planning or execution of this proposed CME activity by an organization other than The Ohio State University:

Ralph Augostini, MD discloses he has relationships with commercial interests in the following areas: Grant/Research Support: Medtronic; Consultant/Speaker Bureau: Respicardia; and Advisory Board Membership: Medtronic. His presentation **will not** include discussion of unapproved or “off-label” usage of commercial products and/or devices.

Gopi Dandamudi, MD discloses he has relationships with commercial interests in the following areas: Consultant/Speaker Bureau: Medtronic. His presentation **will not** include discussion of unapproved or “off-label” usage of commercial products and/or devices.

Emile Daoud, MD discloses he has relationships with commercial interests in the following areas: Grant/Research Support: Boston Scientific, Biotronik, Biosense Webster, and Abbott; and Advisory Board Membership: Biosense Webster. His presentation **will not** include discussion of unapproved or “off-label” usage of commercial products and/or devices.

Melissa Emani, CNP discloses she has relationships with commercial interests in the following areas: Grant/Research Support: Abbott/St. Jude Medical, CHF Solutions, Medtronic, and Stebleton and Snyder; Consultant/Speaker Bureau: Abbott/St. Jude Medical; Advisory Board Membership: Care DX; and Other Financial Material Support : Boston Scientific. Her presentation **will not** include discussion of unapproved or “off-label” usage of commercial products and/or devices.

Michael Gold, MD discloses he has relationships with commercial interests in the following areas: Grant/Research Support: Boston Scientific; Advisory Board Membership: Medtronic; and Honorarium Recipient: Boston Scientific and Medtronic. His presentation **will not** include discussion of unapproved or “off-label” usage of commercial products and/or devices.

Mahmoud Housse, MD discloses he has relationships with commercial interests in the following areas: Grant/Research Support: Medtronic; and Consultant/Speaker Bureau: St. Jude Medical. His presentation **will not** include discussion of unapproved or “off-label” usage of commercial products and/or devices.

John Hummel, MD discloses he has relationships with commercial interests in the following areas: Grant/Research Support: Abbott and Medtronic; Consultant/Speaker Bureau: Abbott EP; Advisory Board Membership: Abbott and Medtronic; and Editorial Board Involvement: JICE and Circulation Arrhythmia and Electrophysiology. His presentation **will not** include discussion of unapproved or “off-label” usage of commercial products and/or devices.

Steven Kalbfleisch, MD discloses he has relationships with commercial interests in the following areas: Grant/Research Support: Biotronik, Boston Scientific, Medtronic and St. Jude Medical. His presentation **will not** include discussion of unapproved or “off-label” usage of commercial products and/or devices.

Bradley Knight, MD discloses he has relationships with commercial interests in the following areas: Grant/Research Support: Biosense Webster, Biotronik, Boston Scientific, Medtronic, and St. Jude Medical; Honorarium Recipient: Biosense Webster, Biotronik, Boston Scientific, Johnson and Johnson, Medtronic, and St. Jude Medical; and Editorial Board Involvement: Up To Date. His presentation **will not** include discussion of unapproved or “off-label” usage of commercial products and/or devices.

Rod Passman, MD discloses he has relationships with commercial interests in the following areas: Grant/Research Support: Alivacor and Pfizer; Consultant/Speaker Bureau: Biotronik and Medtronic; Advisory Board Membership: Biotronik and Medtronic; and Other Financial Material Support: Up To Date. His presentation **will not** include discussion of unapproved or “off-label” usage of commercial products and/or devices.

- **Frank Pelosi, Jr., MD** discloses he has relationships with commercial interests in the following areas: Grant/Research Support: Abbott, Biotronik, Boston Scientific, and Medtronic; Consultant/Speaker Bureau: Boston Scientific and Medtronic; Advisory Board Membership: Boston Scientific; and Honorarium Recipient: Boston Scientific and Medtronic. His presentation **will** include discussion of unapproved or “off-label” usage of commercial products and/or devices.
- **Adam Strickberger, MD** discloses he has relationships with commercial interests in the following areas: Grant/Research Support: St. Jude Medical; and Advisory Board Membership: St. Jude Medical. His presentation **will not** include discussion of unapproved or “off-label” usage of commercial products and/or devices.
- **Raul Weiss, MD** discloses he has relationships with commercial interests in the following areas: Grant/Research Support: Biosense Webster, Biotronik, Boston Scientific, Medtronic, and St. Jude Medical; ; Consultant/Speaker Bureau: Biosense Webster, Biotronik, Boston Scientific, and Merit Medical; and Advisory Board Membership: Biosense Webster and Boston Scientific. His presentation **will not** include discussion of unapproved or “off-label” usage of commercial products and/or devices.

Conference Objectives

At the conclusion of this activity, participants should be able to:

1. Enhance knowledge on cardiac resynchronization therapy
2. Review alternative techniques for CS lead delivery & alternative pacing sites (Optimizing results for CRT-Non Responder)
3. Identify how to improve practice efficiency & outcome
4. Outline therapeutic options for patients with compromised lead function
5. Discuss patient medical management options & ablation intervention for patients with complex arrhythmias
6. Understand which patients with atrial fibrillation require anticoagulation (new concepts)
7. Describe pharmacological and non-pharmacological alternatives to Warfarin

Clinical Trial: QP ExCELS

OSU is participating in a **clinical trial** for the evaluation of the **Sentus QP lead**.

Enrolling patients with*:

- CRT-D indication
- No previous LV lead

**Additional criteria may apply.*

OSU Heart & Vascular Research Organization

For Information or patient referrals:

614-685-4619

Cardiovascular.Research@osumc.edu



AGENDA DISCLAIMER

CCME presents this activity for educational purposes only. Participants are expected to utilize their own expertise and judgment while engaged in the practice of medicine. The content of the presentations is provided solely by presenters who have been selected for presentations of recognized expertise in their field.

Nothing in this program is intended to imply that any off-label or unapproved product use disclosed is reimbursed by any government or private payor or that submission of a claim for such use is proper.

No further reproduction or distribution is permitted by electronic transmission or any other means. The presentations at this conference are the intellectual property of the presenter and require his/her permission for further use.

Clinical Trial: **Simplicity AF**

OSU is participating in a **clinical trial** evaluating performing *both renal artery denervation and pulmonary vein isolation* on the same patient with paroxysmal or persistent atrial fibrillation with hypertension.

Enrolling patients that meet the following criteria*:

- Paroxysmal or Persist AF
- BP \geq 140 on 1 BP medication
- Failed Antiarrhythmic drug

**Additional criteria may apply.*

OSU Heart & Vascular Research Organization
For Information or patient referrals:
614-685-4619
Cardiovascular.Research@osumc.edu

Additional Resources and Education Opportunities

Atrial Fibrillation webcast: go.osu.edu/Afib

Anticoagulation and New Anticoagulants webcast: go.osu.edu/Anticoagulation

Clinical Trial: **Redo-FIRM**

Randomized Evaluation of Redo Ablation Procedures of Atrial Fibrillation with Focal Impulse and Rotor Modulation Guided Procedures.

Enrolling patients with*:

- Paroxysmal or Persist AF
- Indication for first repeat ablation

**Additional criteria may apply.*

Randomized PVI vs PVI + FIRM

OSU Heart & Vascular Research Organization
For Information or patient referrals:
614-685-4619
Cardiovascular.Research@osumc.edu

Clinical Trial: **CRT-P vs. CRT-D**

*Cardiac Resynchronization in the Elderly:
Piloting Pacemaker vs. Defibrillator Therapy.*

Enrolling patients that meet the following criteria*:

- 75+yo randomized to CRT-P vs. CRT-D

**Additional criteria may apply.*

Patients can enter registry in place of randomization.

OSU Heart & Vascular Research Organization
For Information or patient referrals:
614-685-4619
Cardiovascular.Research@osumc.edu

Clinical Trial: **UNTOUCHED**

A Non-randomized
Clinical Trial to
understand outcomes
with the **EMBLEM™ S-ICD**
in Primary Prevention
Patients with Low
Ejection Fraction.

Enrolling patients that meet
the following criteria:*

- Indicated for S-ICD (denovo)
- EF \leq 35%

**Additional criteria may apply.*

OSU Heart & Vascular Research Organization
For Information or patient referrals:
614-685-4619
Cardiovascular.Research@osumc.edu

Clinical Trial: **Plexa**

OSU is participating
in a **clinical trial** for
the evaluation of the
Plexa lead.



OSU Heart & Vascular Research Organization
For Information or patient referrals:
614-685-4619
Cardiovascular.Research@osumc.edu

Enrolling patients*:

- Indicated to
receive Plexa lead

**Additional criteria may apply.*

Clinical Trial: **CRT-P vs. CRT-D**

*Cardiac Resynchronization in the Elderly:
Piloting Pacemaker vs. Defibrillator Therapy.*

Enrolling patients that meet the following criteria*:

- 75+yo randomized to CRT-P vs. CRT-D

**Additional criteria may apply.*

Patients can enter registry in place of randomization.

OSU Heart & Vascular Research Organization

For Information or patient referrals:

614-685-4619

Cardiovascular.Research@osumc.edu



Ohio State's Davis Heart and Lung Research Institute

One of the largest free-standing heart and lung institutes in the nation

Additional Resources and Education Opportunities

Atrial Fibrillation webcast: go.osu.edu/Afib

Anticoagulation and New Anticoagulants webcast: go.osu.edu/Anticoagulation



Improving People's Lives Through Innovations in Personalized Health Care

OSU Heart & Vascular Research Organization

For Information or patient referrals:

614-685-4619

Cardiovascular.Research@osumc.edu



